

## Affordable Housing for Older Adults

Mount Mercy Apartments offers income-eligible older and disabled adults attractive, well-maintained apartments and a warm, inviting atmosphere. Residents enjoy friendly neighbors along with the following features and amenities:

- Affordable rent includes utilities
- Barrier-free units available
- Barrier-free building access, elevators
- Entrance intercom system
- Major appliances furnished
- Cable TV available
- Full-time on-site housing and Resident Services staff
- Full-time on-site maintenance staff, 24-hour emergency maintenance service
- Laundry facilities
- On-site food pantry
- On-site Senior Meals café
- Community room with kitchen
- Scheduled social events and activities
- Exercise classes, craft room, library
- Set on 30 beautiful, park-like acres
- Conveniently located near shopping and transportation



1425 & 1511 Bridge Street NW, Grand Rapids, MI 49504 | 616/235-2843

Built in 1917 as a Catholic convent and private school, Mount Mercy was acquired by the Grand Rapids Housing Commission (GRHC) in 1991 and renovated to provide 125 affordable retirement apartments for ages 55 and older. The beautiful and historic structure is located on 30 rolling, park-like acres just northwest of downtown Grand Rapids.

Construction of a 55-unit addition was completed in 2005. At least one-quarter of these 525-square-foot apartments are allocated to low-income seniors who have disabilities or long-term support requirements that impede their ability to live independently. The Housing Commission's Resident Services team works with local senior-service agencies and health care organizations to provide a variety of supportive services that meet these residents' needs. Eligible tenants receive a federal rental subsidy, which means rent is not more than 30 percent of a household's adjusted monthly income.

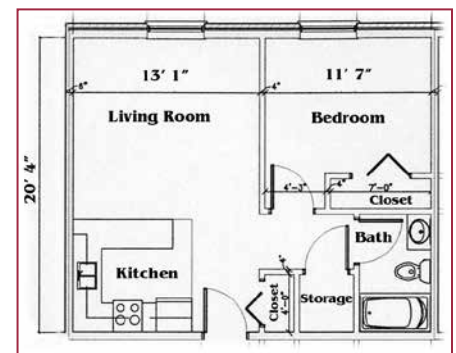
Mount Mercy is operated by the Grand Rapids Housing Commission (GRHC). A Housing Application form

for this and other GRHC retirement and family housing developments is available online at [www.grhousing.org](http://www.grhousing.org). Prospective tenants can also get an application form and more information by calling the GRHC main office at 616/235-2600.

**Mount Mercy is currently accepting applications from seniors age 55 and older.**

To be eligible to receive a federal rental subsidy, a tenant must be age 62 or older, or age 55 or older and disabled. Additionally, tenants must meet the following income requirements:

Family Size	Maximum Annual Income
One	\$30,840
Two	\$35,220



Floor plan of a typical apartment.

