

## Affordable Housing for Families, Senior Citizens and Disabled Persons

Creston Plaza offers detached single-family homes as well as semi-detached duplex-, triplex- and townhouse-style apartments. Layouts offer one to four bedrooms. Features and amenities include:

- LEED-certified construction, energy-efficient design
- Rent includes water/sewer and trash removal
- Electric stoves and refrigerators provided
- Washer and dryer hookups
- Central air conditioning
- Smoke-free environment
- Wired for cable TV
- Window blinds provided
- Private entrances
- All units have storage space
- 24-hour emergency maintenance
- Off-street parking
- On-site Resident Services Specialist links residents with community resources
- On-site Community Center
- On city bus line



1080 Creston Plaza Drive NE, Grand Rapids, MI 49503 | 616/235-2600

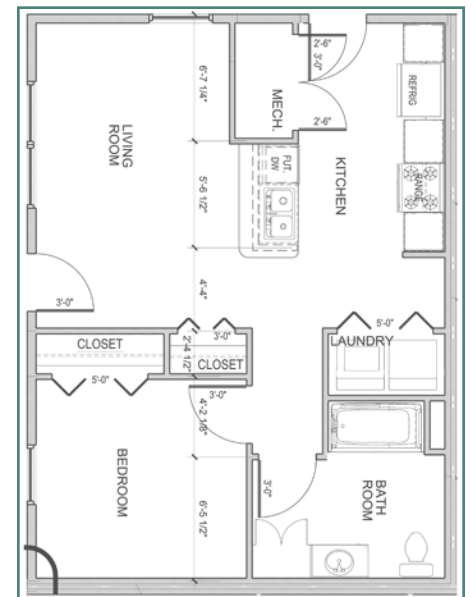
Located near shopping and public transportation in a well-established Grand Rapids neighborhood, Creston Plaza offers affordable housing to low-income households, including families, senior citizens and the disabled.

Completely redeveloped in 2015, the 100-unit development features one- to four-bedroom single-family homes or apartments that range in size from 800 to 1,200 square feet. Monthly rents for eligible households are based on each tenant's ability to pay and are no more than 30 percent of a family's adjusted monthly income. A grant from the U.S. Department of Housing and Urban Development makes it possible for the Housing Commission to offer rents well below the average rates for comparable rental units in our area.

A Housing Application form for this and other GRHC housing developments is available online at [www.grhousing.org](http://www.grhousing.org). Prospective tenants can also get an application form and more information by calling the GRHC administrative office at 616/235-2600.

Homes and apartments are available to families that meet the following income requirements:

Family Size	Income Limits
1 . . . . .	\$28,080
2 . . . . .	\$32,100
3 . . . . .	\$36,120
4 . . . . .	\$40,080
5 . . . . .	\$43,320
6 . . . . .	\$46,500
7 . . . . .	\$49,740
8+ . . . . .	\$52,920



Floor plan, one-bedroom unit