

Affordable Housing for Older Adults

Leonard Terrace Apartments is a 125-unit retirement community that offers income-eligible older adults attractive, well-maintained apartments and a warm, inviting atmosphere. Residents enjoy friendly neighbors along with the following features and amenities:

- Affordable rent includes utilities
- Barrier-free building access, elevators
- Entrance intercom system
- Major appliances furnished
- Cable TV available
- On-site housing staff
- On-site maintenance staff, 24-hour emergency maintenance
- On-site food pantry
- On-site Meals On Wheels Dining Center
- Computer lab
- Laundry facilities
- Community Room with kitchen
- Professionally maintained grounds
- Conveniently located near shopping and transportation
- Social events and activities



1315 Leonard Street NE, Grand Rapids, MI 49505 | (616) 235-2890

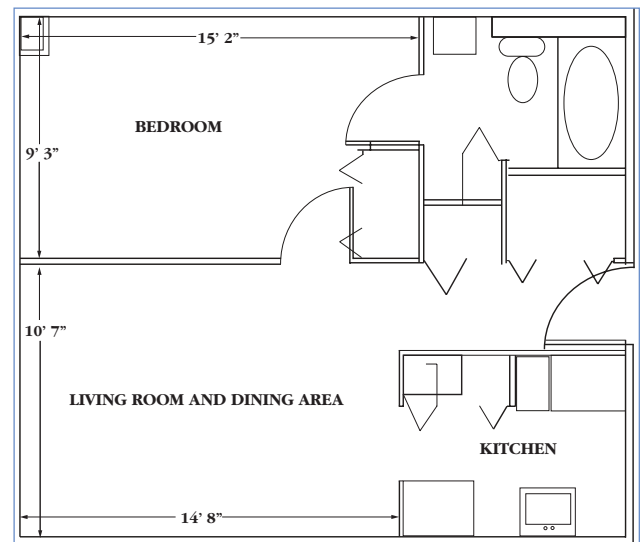
Conveniently located just steps from a supermarket, shopping center, bank and bus stop, Leonard Terrace offers secure, comfortable retirement living for ages 55 and older. Eligible tenants receive a federal rental subsidy, which means rent is not more than 30 percent of the household's adjusted monthly income.

Leonard Terrace is operated by the Grand Rapids Housing Commission (GRHC). A Housing Application form for this and other GRHC housing developments is available online at www.grhousing.org. Prospective tenants can also get an application form and more information by calling the GRHC main office at 616/235-2600.

Leonard Terrace Apartments is currently accepting applications from seniors age 55 and older.

To be eligible to receive a federal rental subsidy, a tenant must be age 62 or older, or age 55 or older and have a disability. Additionally, tenants must meet the following income requirements:

Family Size	Maximum Annual Income
One	\$31,350
Two	\$35,800



Floor plan of a typical 460-square-foot apartment